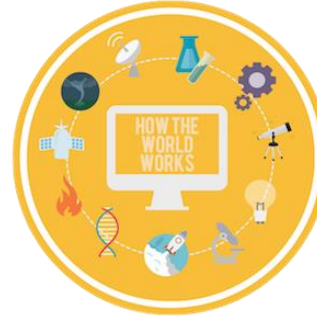


# Kindergarten Programme Of Inquiry



*An inquiry into the nature of the self; beliefs and values; personal, physical, mental, social and spiritual health; human relationships including families, friends, communities, and cultures; rights and responsibilities; what it means to be human.*

*An inquiry into orientation in place and time; personal histories; homes and journeys; the discoveries, explorations and migrations of humankind; the relationships between and the interconnectedness of individuals and civilizations, from local and global perspectives.*

*An inquiry into the ways in which we discover and express ideas, feelings, nature, culture, beliefs and values; the ways in which we reflect on, extend and enjoy our creativity; our appreciation for the aesthetic.*

*An inquiry into the natural world and its laws; the interaction between the natural world (physical and biological) and human societies; how humans use their understanding of scientific principles; the impact of scientific and technological advances on society and the environment.*

*An inquiry into the interconnectedness of human-made systems and communities; the structure and function of organizations; societal decision-making; economic activities and their impact on humankind and the environment.*

*An inquiry into the rights and responsibilities in the struggle to share finite resources with other people and with other living things; communities and the relationship within and between them; access to equal opportunities; peace and conflict resolution.*

**Central Idea:**  
Communities can strengthen our knowledge.

**Central Idea:**  
Culture and tradition shape who we are and how we look at the world.

**Central Idea:**  
The world around us is discovered through our ideas and feelings.

**Central Idea:**  
Exploring living and nonliving things helps us learn about the world.

**Central Idea:**  
People play an important role in their communities.

**Central Idea:**  
The survival of living things is impacted by how they share the planet.

- Lines of Inquiry:**
- How we learn from each other
  - How different communities are organized
  - Explore myself by learning about my community

- Lines of Inquiry:**
- Awareness of culture and traditions
  - Understanding the history of self and others
  - My family, then and now

- Lines of Inquiry:**
- Use senses to take in information
  - Organize information to better understand
  - Make connections to new information

- Lines of Inquiry:**
- Explore living/nonliving things in our world
  - The effects of weather on living/nonliving things
  - Cycles of living/nonliving things

- Lines of Inquiry:**
- Explore roles within communities
  - The rules communities have
  - Recognizing patterns within a community

- Lines of Inquiry:**
- Explore how living things depend on one another
  - Explore how living things are connected
  - The survival needs of all living things

**Key Concepts:**

- Responsibility
- Function
- Form

**Related Concepts:**

- Relationships, Systems, Citizenship

**Key Concepts:**

- Connection
- Perspective
- Causation

**Related Concepts:**

- History, Beliefs, Classification

**Key Concepts:**

- Function
- Perspective
- Connection

**Related Concepts:**

- Exploration, Connections, Creativity

**Key Concepts:**

- Causation
- Change
- Form

**Related Concepts:**

- Cycles, Characteristics, Adaptions

**Key Concepts:**

- Function
- Connection
- Form

**Related Concepts:**

- Systems, Networks, Roles

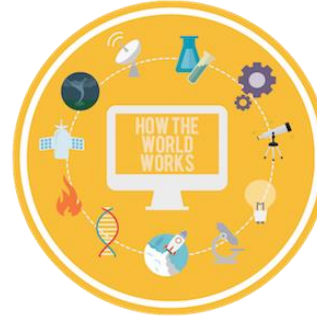
**Key Concepts:**

- Connection
- Responsibility
- Reflection

**Related Concepts:**

- Interdependence, Cooperation, Systems

# 1<sup>st</sup> Grade Programme Of Inquiry



An inquiry into the nature of the self; beliefs and values; personal, physical, mental, social and spiritual health; human relationships including families, friends, communities, and cultures; rights and responsibilities; what it means to be human.

An inquiry into orientation in place and time; personal histories; homes and journeys; the discoveries, explorations and migrations of humankind; the relationships between and the interconnectedness of individuals and civilizations, from local and global perspectives.

An inquiry into the ways in which we discover and express ideas, feelings, nature, culture, beliefs and values; the ways in which we reflect on, extend and enjoy our creativity; our appreciation for the aesthetic.

An inquiry into the natural world and its laws; the interaction between the natural world (physical and biological) and human societies; how humans use their understanding of scientific principles; the impact of scientific and technological advances on society and the environment.

An inquiry into the interconnectedness of human-made systems and communities; the structure and function of organizations; societal decision-making; economic activities and their impact on humankind and the environment.

An inquiry into the rights and responsibilities in the struggle to share finite resources with other people and with other living things; communities and the relationship within and between them; access to equal opportunities; peace and conflict resolution.

## Central Idea:

Our attitudes and actions have an impact on our relationships with others.

## Central Idea:

Our history influences our present and gives insight into the future.

## Central Idea:

Our cultures values come from celebrations and traditions.

## Central Idea:

Our interaction with the world is influenced by cycles.

## Central Idea:

Leaders can have an impact on society.

## Central Idea:

The choices we make impact the world.

## Lines of Inquiry:

- Identify reasons for a person's thoughts, words, and actions
- Effective communication and problem solving
- Connecting attitude and actions to friendships

## Lines of Inquiry:

- Legacies of historical figures
- Future possibilities
- Similarities and differences across time

## Lines of Inquiry:

- The characteristics of traditions and celebrations
- Understanding the character traits of different cultures
- Contributions of people in creating traditions or celebrations

## Lines of Inquiry:

- Explore the cycles of living and nonliving things
- Similarities and differences of cycles
- Cycles show how living and nonliving things depend on each other

## Lines of Inquiry:

- Characteristics of an effect leader
- Leaders past and present
- Leaders impact on society

## Lines of Inquiry:

- Describe choices that impact others
- The conservation, usage, and pollution of resources
- Identify and explain how the choices people make impact the world

## Key Concepts:

- Responsibility
- Reflection
- Perspective

## Related Concepts:

- Friendship, Cooperation, Communication

## Key Concepts:

- Perspective
- Connection
- Change

## Related Concepts:

- History, Time, Adaption

## Key Concepts:

- Perspective
- Function
- Reflection

## Related Concepts:

- Traditions, Culture, Expression

## Key Concepts:

- Form
- Function
- Change

## Related Concepts:

- Cycles, Classification, Growth

## Key Concepts:

- Reflection
- Perspective
- Responsibility

## Related Concepts:

- Initiative, Beliefs, Values

## Key Concepts:

- Causation
- Reflection
- Responsibility

## Related Concepts:

- Sustainability, Lifestyle, Conservation

# 2<sup>nd</sup> Grade Programme Of Inquiry



An inquiry into the nature of the self; beliefs and values; personal, physical, mental, social and spiritual health; human relationships including families, friends, communities, and cultures; rights and responsibilities; what it means to be human.

An inquiry into orientation in place and time; personal histories; homes and journeys; the discoveries, explorations and migrations of humankind; the relationships between and the interconnectedness of individuals and civilizations, from local and global perspectives.

An inquiry into the ways in which we discover and express ideas, feelings, nature, culture, beliefs and values; the ways in which we reflect on, extend and enjoy our creativity; our appreciation for the aesthetic.

An inquiry into the natural world and its laws; the interaction between the natural world (physical and biological) and human societies; how humans use their understanding of scientific principles; the impact of scientific and technological advances on society and the environment.

An inquiry into the interconnectedness of human-made systems and communities; the structure and function of organizations; societal decision-making; economic activities and their impact on humankind and the environment.

An inquiry into the rights and responsibilities in the struggle to share finite resources with other people and with other living things; communities and the relationship within and between them; access to equal opportunities; peace and conflict resolution.

## Central Idea:

Personal responsibilities impact ourselves and those around us.

## Central Idea:

Choices throughout history change the world

## Central Idea:

Cultures are defined through storytelling.

## Central Idea:

The forces of nature change the environment and people's lives.

## Central Idea:

Needs and wants are impacted by the choices people make.

## Central Idea:

Interactions influence elements of our environment.

## Lines of Inquiry:

- Choices reflect what an individual value
- Rights and responsibilities
- The influence of values on actions

## Lines of Inquiry:

- Historical figures contributions
- Qualities that make people remembered
- Citizens actions

## Lines of Inquiry:

- The importance of storytelling
- How are stories communicated
- The many interpretations of stories

## Lines of Inquiry:

- Interaction between the forces of nature
- Causes and effects of nature
- Changes in geography

## Lines of Inquiry:

- The characteristics of needs and wants
- Economic systems
- Observations of people's choices

## Lines of Inquiry:

- Reasons for change
- Positive and negative effects of human actions
- Relationships within environments

## Key Concepts:

- Causation
- Responsibility
- Reflection

## Related Concepts:

- Choice, Behavior, Decisions

## Key Concepts:

- Perspective
- Reflection
- Responsibility

## Related Concepts:

- Opinion, Values, Behavior

## Key Concepts:

- Perspective
- Form
- Connection

## Related Concepts:

- Values, Relationships, Cultures

## Key Concepts:

- Form
- Change
- Causation

## Related Concepts:

- Weather, Climate, Geography

## Key Concepts:

- Connection
- Function
- Causation

## Related Concepts:

- Systems, Justice, Interpretation

## Key Concepts:

- Change
- Causation
- Reflection

## Related Concepts:

- Systems, Interdependence, Conservation



# 3<sup>rd</sup> Grade Programme Of Inquiry



An inquiry into the nature of the self; beliefs and values; personal, physical, mental, social and spiritual health; human relationships including families, friends, communities, and cultures; rights and responsibilities; what it means to be human.

**Central Idea:**  
What we think about the world is influenced by people's actions and choices.

- Lines of Inquiry:**
- How we classify people
  - Influence of others on our choices and actions
  - How and why role models are chosen

**Key Concepts:**

- Causation
- Perspective
- Connection

**Related Concepts:**

- Identity, Opinions, Justice



An inquiry into orientation in place and time; personal histories; homes and journeys; the discoveries, explorations and migrations of humankind; the relationships between and the interconnectedness of individuals and civilizations, from local and global perspectives.

**Central Idea:**  
Personal histories are shaped by those before us.

- Lines of Inquiry:**
- People changing over time
  - How events have impacted individuals and societies
  - Historical events have impacted how we live today

**Key Concepts:**

- Form
- Function
- Change

**Related Concepts:**

- Journey, Societies, Transformation



An inquiry into the ways in which we discover and express ideas, feelings, nature, culture, beliefs and values; the ways in which we reflect on, extend and enjoy our creativity; our appreciation for the aesthetic.

**Central Idea:**  
We develop a better understanding of ourselves by sharing our ideas, hopes, and interest.

- Lines of Inquiry:**
- How we know who we are
  - How we learn about others and ourselves
  - Reflection of our values and ideas

**Key Concepts:**

- Perspective
- Function
- Reflection

**Related Concepts:**

- Discovery, Perception, Interpretation



An inquiry into the natural world and its laws; the interaction between the natural world (physical and biological) and human societies; how humans use their understanding of scientific principles; the impact of scientific and technological advances on society and the environment.

**Central Idea:**  
Living things go through cycles and depend on adaptations for survival.

- Lines of Inquiry:**
- How living things change over time
  - How living things adapt to the environment in which they live
  - Factors that influence each stage of a life cycle

**Key Concepts:**

- Causation
- Change
- Connection

**Related Concepts:**

- Cycles, Transformation, Classification



An inquiry into the interconnectedness of human-made systems and communities; the structure and function of organizations; societal decision-making; economic activities and their impact on humankind and the environment.

**Central Idea:**  
To organize communities and people, we need government structures.

- Lines of Inquiry:**
- The function of local government systems
  - The impact of government on citizens
  - The rights and responsibilities of citizenship

**Key Concepts:**

- Function
- Perspective
- Responsibility

**Related Concepts:**

- Action, Conflict, Governance



An inquiry into the rights and responsibilities in the struggle to share finite resources with other people and with other living things; communities and the relationship within and between them; access to equal opportunities; peace and conflict resolution.

**Central Idea:**  
Communities and individuals' access to equal opportunities is affected by distribution of wealth.

- Lines of Inquiry:**
- Equal opportunities for natural resources, education, employment, and wealth
  - Relationship between wealth and power
  - Equitable access to resources and opportunities

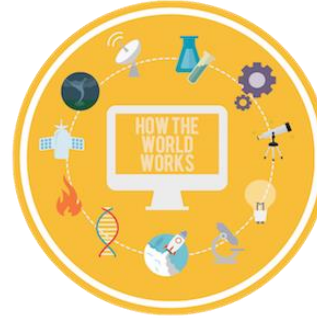
**Key Concepts:**

- Form
- Causation
- Reflection

**Related Concepts:**

- Wealth, Power, Equity

# 4<sup>th</sup> Grade Programme Of Inquiry



An inquiry into the nature of the self; beliefs and values; personal, physical, mental, social and spiritual health; human relationships including families, friends, communities, and cultures; rights and responsibilities; what it means to be human.

An inquiry into orientation in place and time; personal histories; homes and journeys; the discoveries, explorations and migrations of humankind; the relationships between and the interconnectedness of individuals and civilizations, from local and global perspectives.

An inquiry into the ways in which we discover and express ideas, feelings, nature, culture, beliefs and values; the ways in which we reflect on, extend and enjoy our creativity; our appreciation for the aesthetic.

An inquiry into the natural world and its laws; the interaction between the natural world (physical and biological) and human societies; how humans use their understanding of scientific principles; the impact of scientific and technological advances on society and the environment.

An inquiry into the interconnectedness of human-made systems and communities; the structure and function of organizations; societal decision-making; economic activities and their impact on humankind and the environment.

An inquiry into the rights and responsibilities in the struggle to share finite resources with other people and with other living things; communities and the relationship within and between them; access to equal opportunities; peace and conflict resolution.

## Central Idea:

Our environment and characteristics have an impact on our identity

## Central Idea:

Change is cultivated by exploration.

## Central Idea:

Action is ignited by thoughts and feelings.

## Central Idea:

Change is caused by natural and human forces.

## Central Idea:

Government structures have an impact on the way we live.

## Central Idea:

The choices that humans make affect other living things in their communities.

## Lines of Inquiry:

- Traits are learned and inherited
- Perception is shaped by environment
- How interaction provide a deeper understanding of self

## Lines of Inquiry:

- How explores impact social and political change
- How can a student be an explorer?
- How perspectives can be transformed through exploration

## Lines of Inquiry:

- Expressions have different purposes
- There are varied forms and techniques of expressions
- How people take actions on their thoughts and feelings

## Lines of Inquiry:

- How human societies affect the natural world
- Natural cycles
- The impact of energy on environment and society

## Lines of Inquiry:

- Government Structures
- Symbols of Government
- Important Government documents

## Lines of Inquiry:

- Human impact on natural habitats
- How living things respond to change
- Balance between rights and responsibilities when interacting with natural habitats

## Key Concepts:

- Connection
- Perspective
- Reflection

## Related Concepts:

- Communication, Interpretation, Identity

## Key Concepts:

- Change
- Causation
- Perspective

## Related Concepts:

- Adaptations, Beliefs, Consequences

## Key Concepts:

- Form
- Perspective
- Reflection

## Related Concepts:

- Structures, Beliefs, Interpretation

## Key Concepts:

- Form
- Causation
- Change

## Related Concepts:

- Structure, Evidence, Transformation

## Key Concepts:

- Function
- Responsibility
- Causation

## Related Concepts:

- Systems, Impact, Rights

## Key Concepts:

- Causation
- Change
- Responsibility

## Related Concepts:

- Ecosystems, Human Impact, Consequences

# 5<sup>th</sup> Grade Programme Of Inquiry



An inquiry into the nature of the self; beliefs and values; personal, physical, mental, social and spiritual health; human relationships including families, friends, communities, and cultures; rights and responsibilities; what it means to be human.

## Central Idea:

Change is initiated through people's actions.

**“May be altered due to Exhibition**

## Lines of Inquiry:

- Perspectives of notable persons
- Impact on communities
- Differences between cultures

## Key Concepts:

- Perspective
- Causation
- Change

## Related Concepts:

- Prejudice, Transformation, Impact



An inquiry into orientation in place and time; personal histories; homes and journeys; the discoveries, explorations and migrations of humankind; the relationships between and the interconnectedness of individuals and civilizations, from local and global perspectives.

## Central Idea:

Movement pushes progression.

## Lines of Inquiry:

- The pursuit of advancement
- Natural shifts in nonliving elements
- The impact of discoveries and explorations

## Key Concepts:

- Function
- Causation
- Change

## Related Concepts:

- Exploration, Transformation, Movement



An inquiry into the ways in which we discover and express ideas, feelings, nature, culture, beliefs and values; the ways in which we reflect on, extend and enjoy our creativity; our appreciation for the aesthetic.

## Central Idea:

Awareness of the rhythm around us helps to develop human expression.

## Lines of Inquiry:

- Rhythm in nature
- The diverse ways in which people express themselves
- The benefits of rhythm

## Key Concepts:

- Form
- Function
- Change

## Related Concepts:

- Rhythm, Movement, Patterns



An inquiry into the natural world and its laws; the interaction between the natural world (physical and biological) and human societies; how humans use their understanding of scientific principles; the impact of scientific and technological advances on society and the environment.

## Central Idea:

Change is generated by relationships.

## Lines of Inquiry:

- Driving forces of colonization
- How colonist use predetermined factors
- Principles of matter and scientific design

## Key Concepts:

- Form
- Function
- Connection

## Related Concepts:

- Principles, Interactions, Relationships



An inquiry into the interconnectedness of human-made systems and communities; the structure and function of organizations; societal decision-making; economic activities and their impact on humankind and the environment.

## Central Idea:

Laws are made to provide structure to society.

## Lines of Inquiry:

- The structure of government and society
- The formation of government and laws
- How has government changed over time

## Key Concepts:

- Function
- Causation
- Reflection

## Related Concepts:

- Organizations, Conflicts, Resolutions



An inquiry into the rights and responsibilities in the struggle to share finite resources with other people and with other living things; communities and the relationship within and between them; access to equal opportunities; peace and conflict resolution.

## Central Idea:

Societies decisions are based on resources.

## Lines of Inquiry:

- Strategies used to resolve conflict
- Consequences of resolutions
- Causes of conflict

## Key Concepts:

- Perspective
- Connection
- Responsibility

## Related Concepts:

- Conflict, Resources, Decision Making